

# FLYght Duo Insect Light Trap - User's Manual



## SAFETY PRECAUTIONS

Inspect light trap for any damage that may have occurred during shipping.

Connect light trap only to 120V 60Hz electrical supply.

This light trap is only for indoor use, do not expose to water or excess humidity.

Use a grounded extension cord, with 3 terminals; always use an electric outlet that is properly grounded.

## TRAP USE AND PLACEMENT

Installation can be made in residential and commercial kitchens, food preparation areas, food storage rooms, and the dining areas.

Position trap away from direct sunlight.

Position traps to allow for changing glue boards.

Position traps so that it is visible from all areas of room, especially doors

## TRAP INSTALLATION

Select a position with access to a 3-pole electrical outlet. Alterations of the electrical cord must be performed by qualified personnel.

Do not place units where they will be exposed to water during normal operation or during routine cleaning activity of the location.

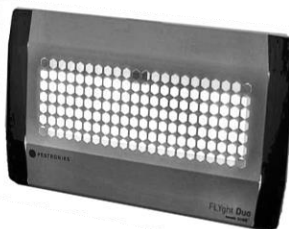
Follow the diagram for placing the wall anchor screws necessary for attaching the unit to a wall.

Trap weighs 5 lbs. Place on a wall that can support this weight.

**Bentz Jaz USA**

**4200 Industrial Center Lane  
Suite 100  
Ackworth GA 30101**

## FLYght Duo



## OPERATION

- BioVE board should be replaced at least 1 time per year. For best results keep the BioVE light board clean.

BioVE board can be slightly bent in the middle to insert into the top and bottom slots on the back panel of the light trap.

Glue boards should be replaced when 60% of the surface is covered with insects.

Disconnect electrical power before cleaning the unit.

Wipe the outside of the trap to keep the opening clean and dust free.

PROBLEM	SOLUTION
LED diodes are flickering	Be sure the unit is grounded properly. Replace LED light stick.
LED diodes do not light	Replace the LED light stick.
Trap stops working after a few days	Inspect the cord connection to the light trap and electrical outlet. Disconnect and contact Bentz Jaz Customer Service

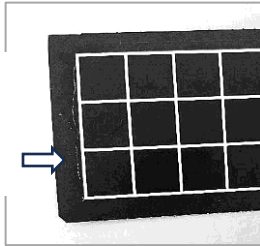
## HAVING PROBLEMS?

**Call the Bentz Jaz USA  
Help Line:  
470-379-4371**

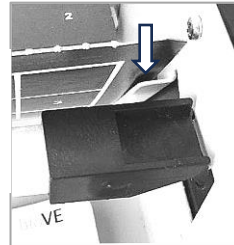
# FLYght Duo Insect Light Trap – Care and Maintenance

## GLUE BOARDS

Glue board edges do not have glue to inserting and removing easy.



Insert glue board face down in groove.



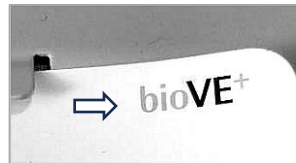
Insert top glue board behind the clip.



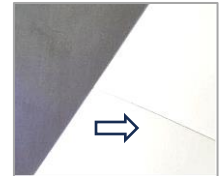
## bioVE BOARD

Replace bioVE board when dirty or damaged, and after 1 year use.

Insert new bioVE board with the logo facing the front.



Bend the bioVE board along the crease on back to fold and insert.



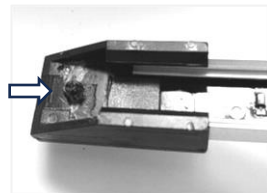
## LED Stick

Replace the LED Stick when one or more of the lights are not shining.



Insert the connector into the end of the new LED Stick.

The ends of the LED Sticks have a button that snaps into a bracket.



The ends of the LED Sticks must be securely snapped into the bracket.



LED Stick bracket.



## UNLIMITED 1-YEAR WARRANTY

To the original purchaser of a new Bentz Jaz USA *FLYght Duo* light trap with proof of purchase and purchase date, Bentz Jaz USA warrants replacement or repair free of charge the *FLYght Duo* light traps deemed by Bentz Jaz USA to be faulty. Replacement or repair of defective parts shall constitute the sole and exclusive remedy of the original purchaser. In no event shall Bentz Jaz USA be liable for any special, consequential, or incidental damages, nor for damage due to accident, abuse, lack of reasonable care, normal wear, unauthorized repair or operation on a power source other than 120V, 60HZ.